

ALLDAY
& MILLER



Harefield Road, Uxbridge, UB8 1PJ
£1,250,000

4 2 3 E



Harefield Road, Uxbridge, UB8 1PJ

£1,250,000

- Four Double Bedrooms
- Double Detached Garage
- Close To Well regarded Schools
- Four Storeys
- Built circa 1875
- Three Reception Rooms
- Prime North Uxbridge Location
- Beautiful Home Filled With Character
- 0.2 Miles To Underground Station
- 2708 Sq ft/ 251 Sq m

Description

This statement character home enjoys a floorplan spread over four floors. The current accommodation comprises of a spacious and bright hallway, three reception rooms, fully integrated kitchen, four double bedrooms (one with en suite bathroom) and two cloakrooms.

The basement level showcases the kitchen and largest reception space with ample natural light

The property is filled with character features including, fire places, high ceilings, sash windows and original floors

The private rear garden enjoys a lawn and patio area with detached double garage from rear access

Situation

Harefield Road is a popular residential road in North Uxbridge, renowned for its variety of prominent family dwellings. Situated just moments from Uxbridge Town Centre the property allows you to enjoy a lifestyle of ultimate convenience. Amenities include the Intu and Pavillions shopping malls, a number of popular eateries such as Frankie & Benny's, Wagamama and Nandos. A choice of cocktail bars, Odeon cinema complex and a selection of gym and leisure clubs. For the road and rail commuter, Uxbridge Tube station offers a Metropolitan and Piccadilly line service from Zone 6 whilst effortless access is provided to the A40/M40 and M25.

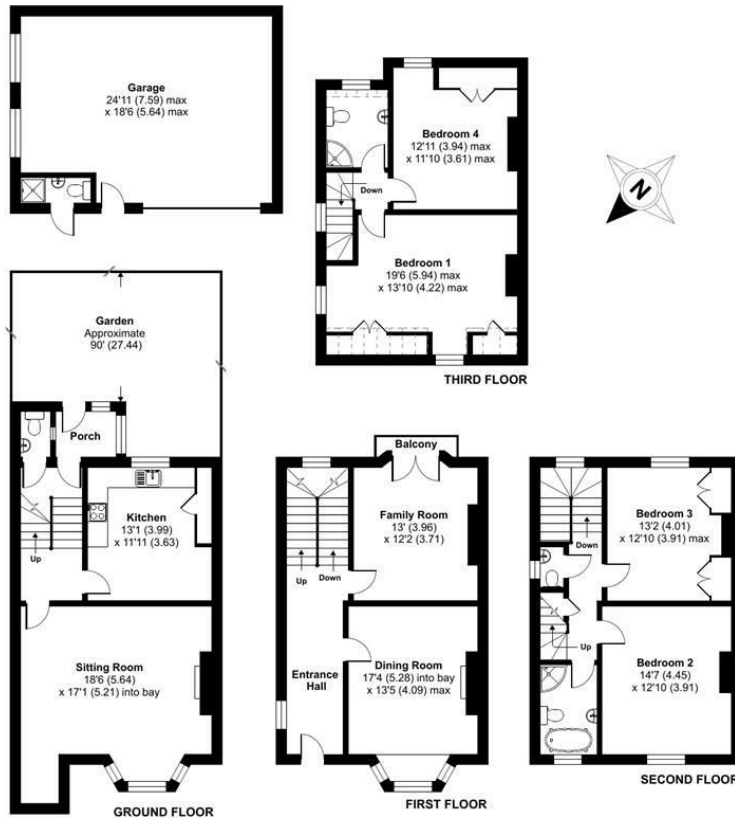


Floor Plans

Harefield Road, Uxbridge, UB8

Approximate Area = 2660 sq ft / 247.1 sq m (includes garage)
 Limited Use Area(s) = 48 sq ft / 4.4 sq m
 Total = 2708 sq ft / 251.5 sq m
 For identification only - Not to scale

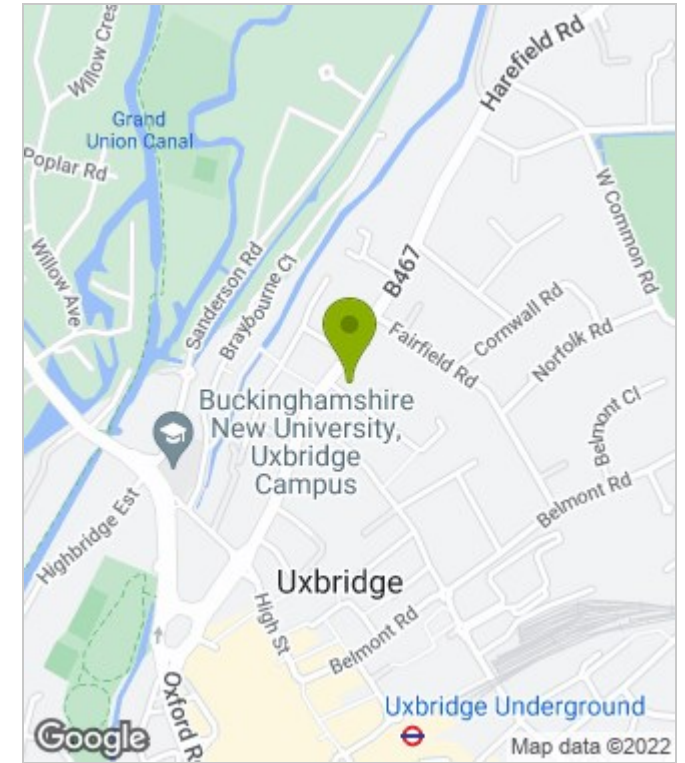
Denotes restricted head height



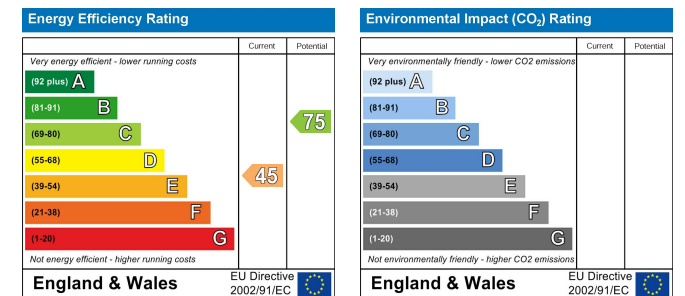
Floor plan produced in accordance with RICS Property Measurement Standards incorporating International Property Measurement Standards (IPMS2 Residential). © rixhocom 2022. Produced for Allday & Miller. REF: 843488



Area Map



Energy Performance Graph



These particulars, whilst believed to be accurate are set out as a general outline only for guidance and do not constitute any part of an offer or contract. Intending purchasers should not rely on them as statements of representation of fact, but must satisfy themselves by inspection or otherwise as to their accuracy. No person in this firm's employment has the authority to make or give any representation or warranty in respect of the property.

www.alldayandmiller.co.uk

192 High Street, Uxbridge, Middlesex, UB8 1LB

T: 01895 641 000 | E: sales@alldayandmiller.co.uk
 T: 01895 379 549 | E: lettings@alldayandmiller.co.uk